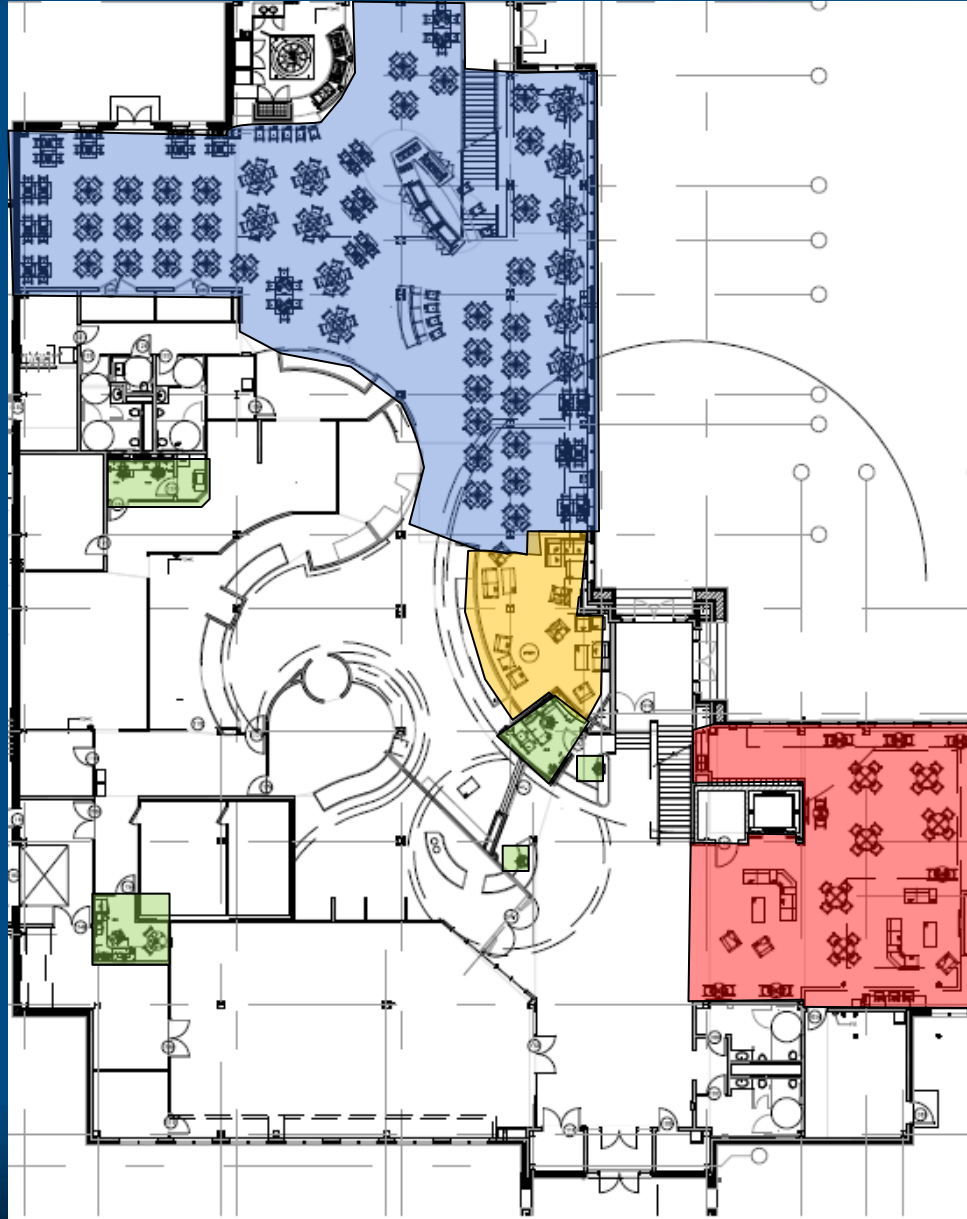


SIENA HEIGHTS UNIVERSITY UNIVERSITY CENTER FURNITURE PROPOSAL

*MEETING MINUTES LISTED IN RED



FIRST FLOOR FURNITURE PLAN



○ **AREA A:**
(Includes Seating/
Meeting Room 135,
Seating Area 138,
& Fresh Market 136)

● **AREA B:**
(Includes Seating
Area-2 Room 140)

● **AREA C:**
(Includes Living
Room 104)

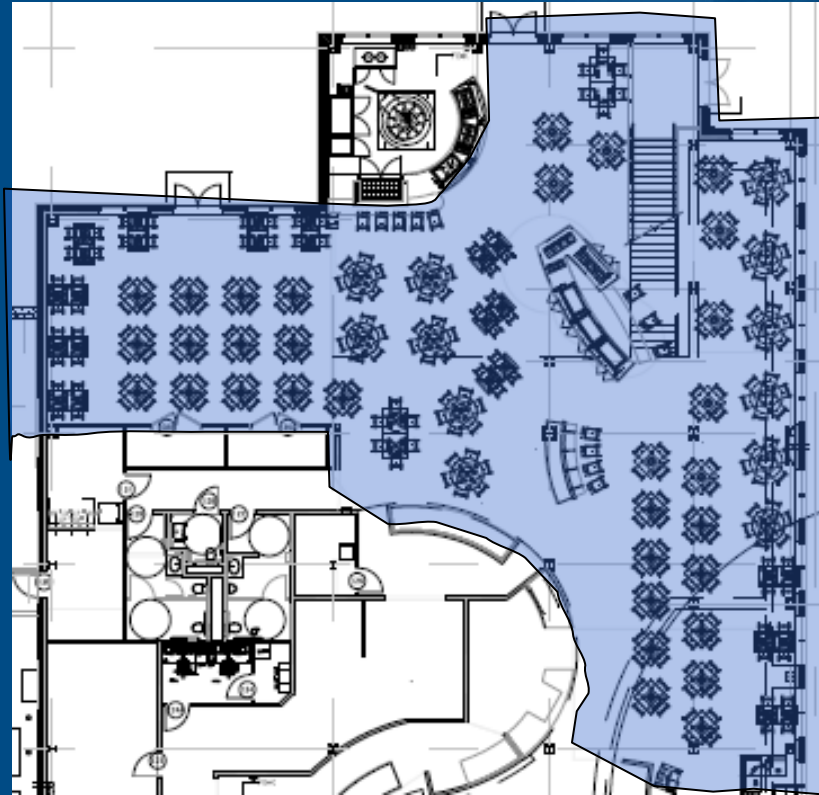
● **AREA D:**
(Includes All Private
Offices/Workstations
on First Floor)



FIRST FLOOR FURNITURE PLAN

AREA A:

(Includes Seating/
Meeting Room 135, Seating Area 138,
& Fresh Market 136)



AREA A: CONCEPT & FINISHES



Design Drivers: Fun, bright colored poly chairs to convey school spirit. Wood grain laminate table tops in various tones add warmth. Need to sit at least 300 in this space and adjacent lounge. Combination of Café and dining heights desired to add visual interest and spatial variety.



AREA A: PRODUCT IMAGERY



Surface Works Extol
Self-Leveling Glides

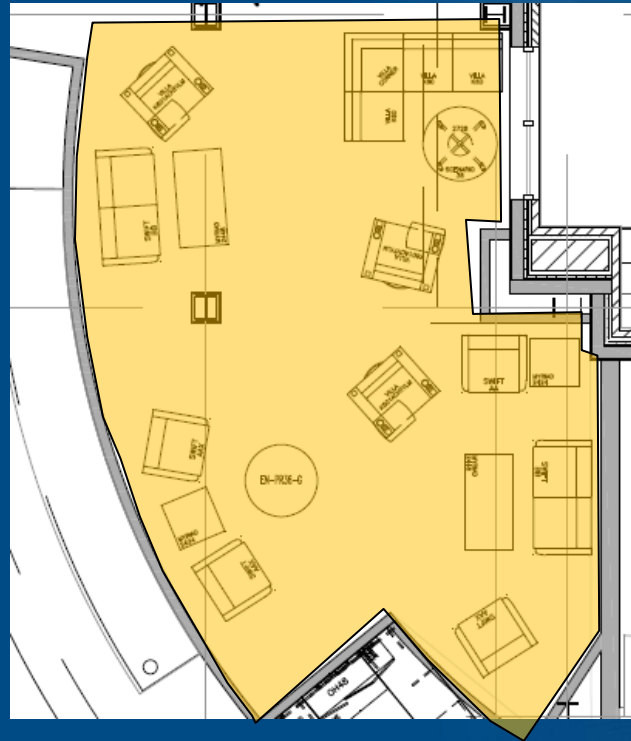


Sit on it Inflex



FIRST FLOOR FURNITURE PLAN

AREA B: (Includes Seating Area-2 Room 140)



AREA B: CONCEPT & FINISHES

Design Drivers: Fun, vibrant colors and patterned upholstery. Combination of vinyl and heavy duty textiles for optimal durability. Overflow/alternative seating from main seating area. Should feel more like a lounge.



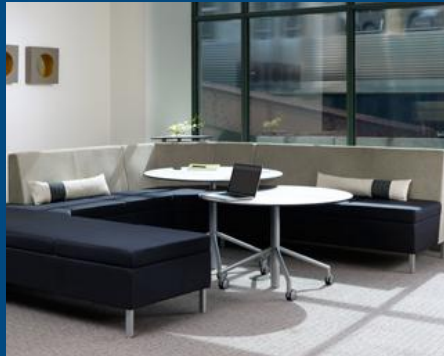
*Meeting Note: The consensus was that all tables should be the "Amber cherry" laminate
All shown finishes here were agreed upon.



AREA B: PRODUCT IMAGERY



National Swift
Better



Kimball Villa
Better



FIRST FLOOR FURNITURE PLAN

AREA C: (Includes Living Room 104)



Design Drivers: Warm, fun and inviting. Should be welcoming and cozy like its living room title states. Should accommodate some recreation such as pool tables and offer a lounge feel for students to hangout, study, or relax.



AREA C: CONCEPT & FINISHES



*Meeting Note: The consensus was that all tables should be the "Amber cherry" laminate
All shown finishes here were agreed upon.
Laminate was selected for the round table tops, Wilsonart, Classic Linen.



the COLLABORATIVE inc

AREA C: PRODUCT IMAGERY



National Swift

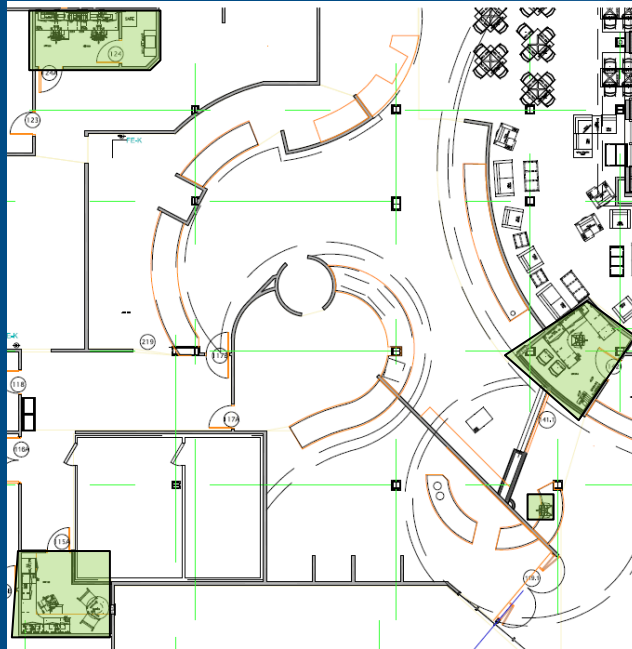


Kimball Bingo



FIRST FLOOR FURNITURE PLAN

AREA D: (Includes All "Private Offices/Workstations on First Floor)



Design Drivers: Flexible and simple L-shape desk with adequate filing and bookcase storage.



AREA D: CONCEPT, FINISHES & PRODUCT IMAGERY



Chef Offices

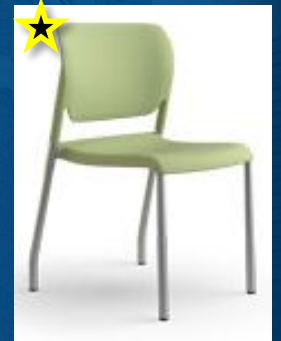
*Meeting Note: The consensus was that offices should be the "Amber cherry" laminate
All shown finishes here were agreed upon.
A File/File Pedestal was added in the top left image where arrow points.



Sit On It Focus Task
Chair with Black Mesh



Security Office



Sit On It Inflex



SECOND FLOOR FURNITURE PLAN



○ **AREA A:**
(Includes Lounge-3
221)

● **AREA B:**
(Includes Lounges
222 & Study Lounge
200)

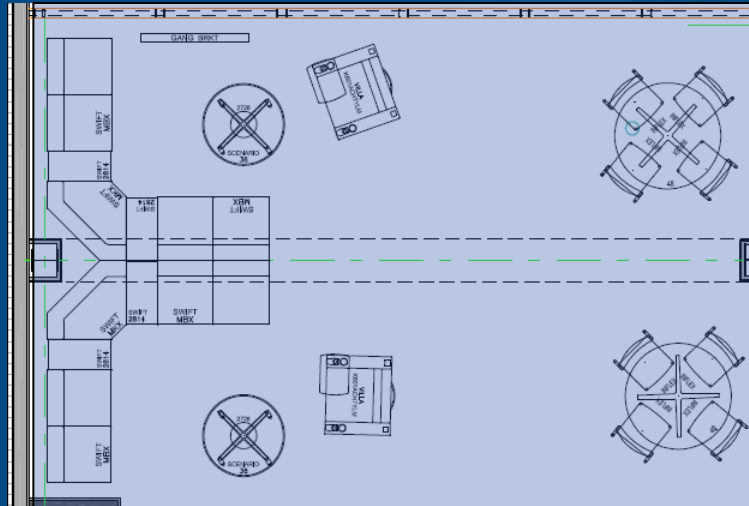
● **AREA C:**
(Includes Lobby 201
& Lounge-1 203)

● **AREA D:**
(Includes All Private
Offices/Workstations
on Second Floor &
Mtg. Room)



SECOND FLOOR FURNITURE PLAN

AREA A: (Includes Lounge-3 221)



Design Drivers: Fun, vibrant colors and patterned upholstery. Combination of vinyl and heavy duty textiles for optimal durability. Should feel more like a lounge.



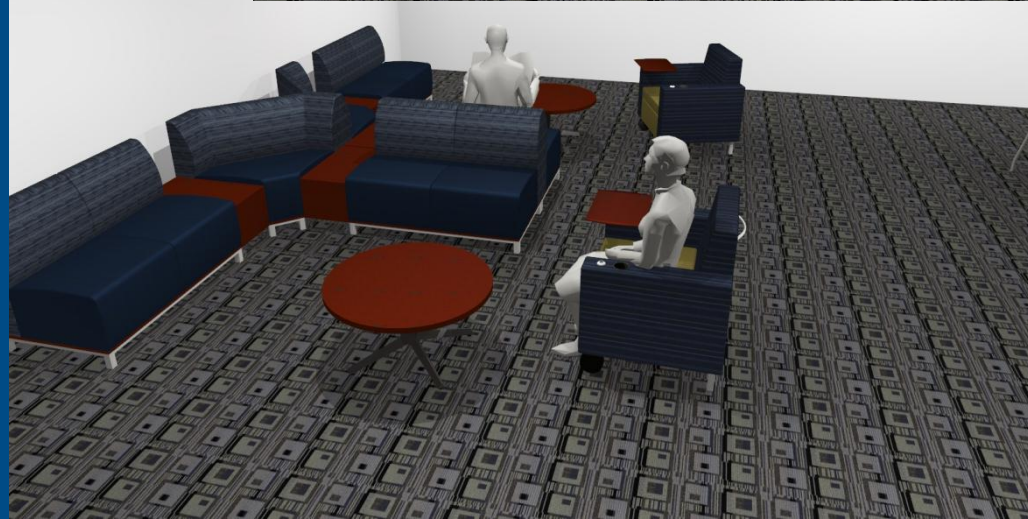
AREA A: CONCEPT & FINISHES



National Swift



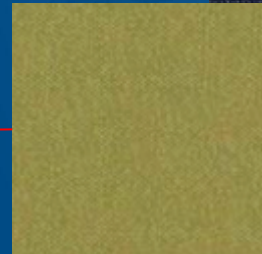
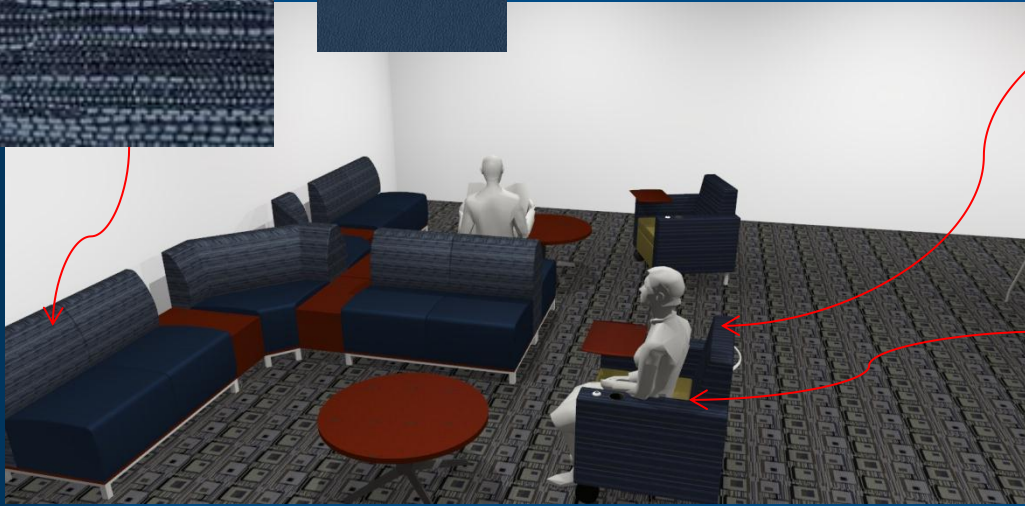
Sit on it Inflex



*Meeting Note: The consensus was that all tables should be the "Amber cherry" laminate Post-Meeting Finish selections/suggestion by American Interiors and The Collaborative Shown on following slide. Actual Samples will be mailed to Michael Orlando's Attention.



LOUNGE REVISED FINISHES

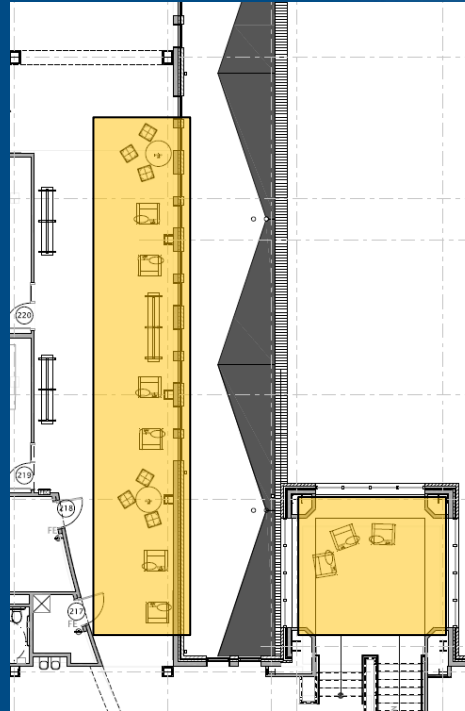


*Because of the bright blue accent wall...the collaborative And American Interiors both feel these selections will work Better than those shown previously at the meeting.

SECOND FLOOR FURNITURE PLAN

AREA B:

(Includes Lounges 222 & Study Lounge 200)



Design Drivers: Fun, vibrant colors and patterned upholstery. Combination of vinyl and heavy duty textiles for optimal durability. Serves as waiting area/study area. Desire for some power locations for plugging in technology where available.



AREA B: PRODUCT IMAGERY



Artopex Element



National Swift



Fixtures Dewey



AREA B: PRODUCT IMAGERY



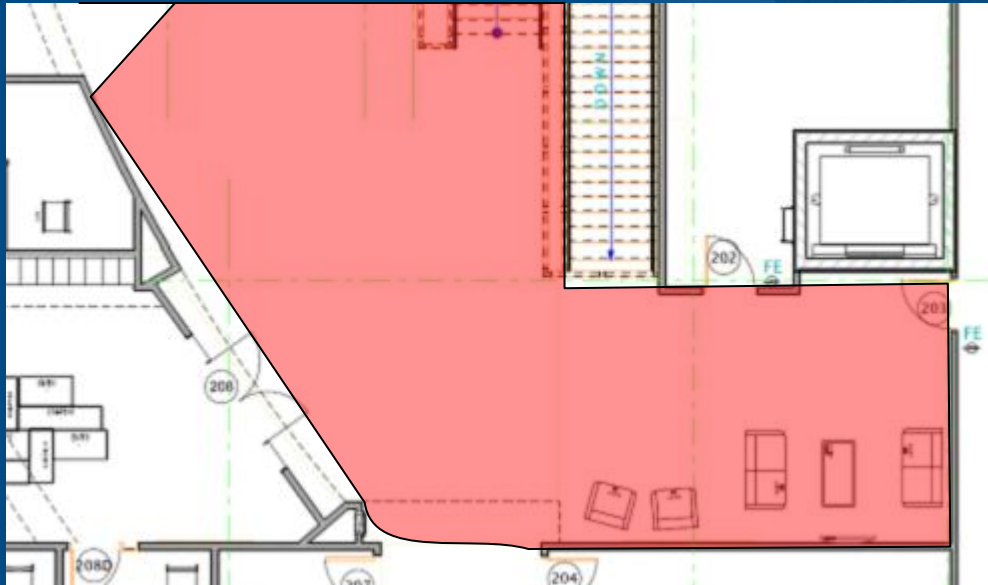
*Meeting Note: The consensus was that all tables should be the "Amber cherry" laminate
All Finish selections shown above were agreed upon and approved.



SECOND FLOOR FURNITURE PLAN

AREA C:

(Includes Lobby 201 & Lounge-1 203)



Design Drivers: Flexible and fun. Hope is to attract and intrigue students. Lounge is adjacent to Student Orgs and should reflect its fun energetic vibe.



AREA C: PRODUCT IMAGERY



National Swift



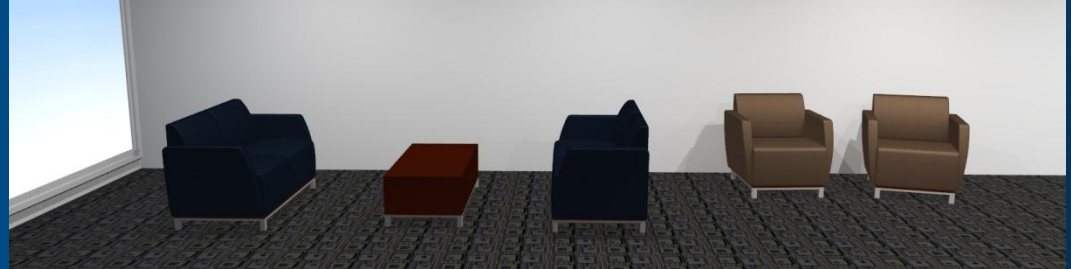
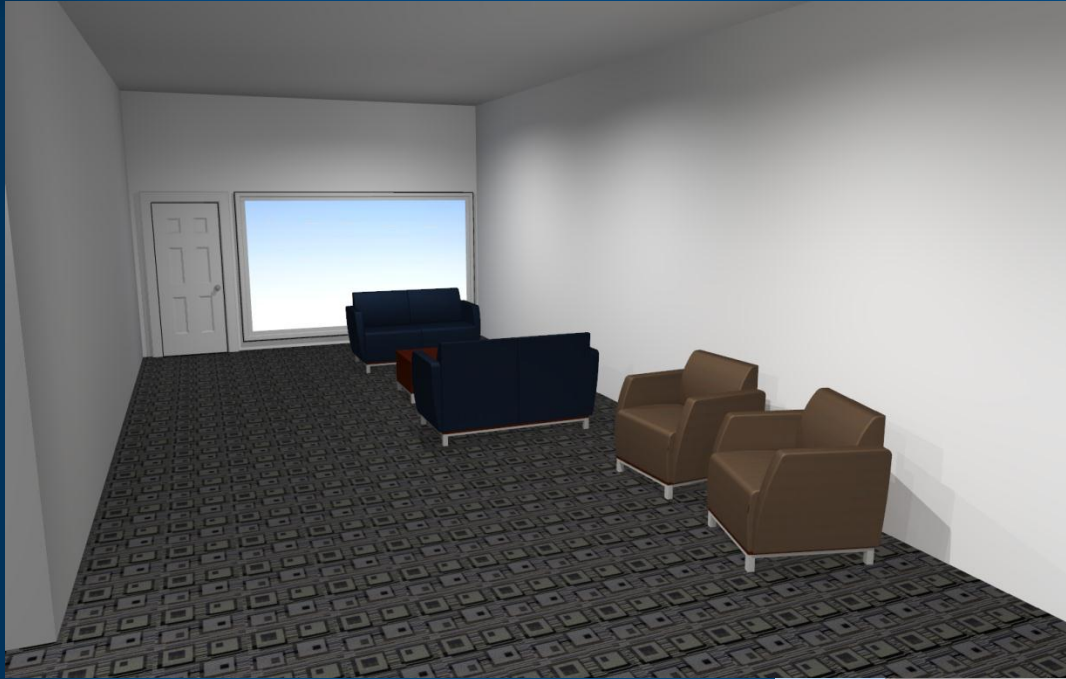
Kimball Bingo



Surface Works Extol
Self-Leveling Glides



AREA C: PRODUCT IMAGERY



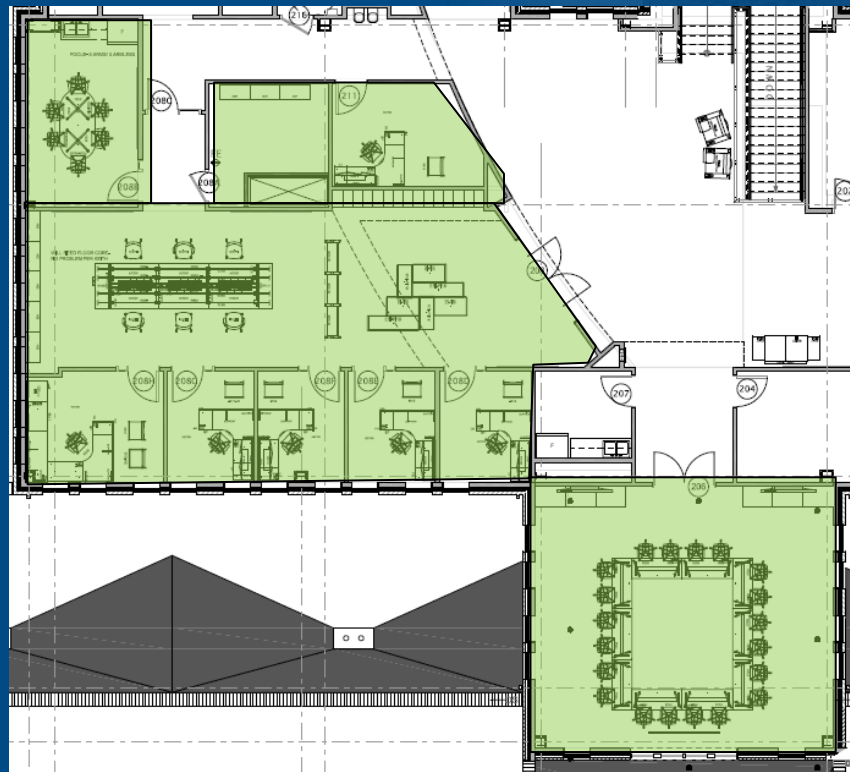
*Meeting Note: The Decision was made that there be (2) loveseats, (2) static lounge chairs, And a coffee table in this area. The consensus was that all tables should be the "Amber cherry" laminate All Finish selections shown above were agreed upon and approved.



SECOND FLOOR FURNITURE PLAN

AREA D:

(Includes All "Private Offices/Workstations on Second Floor)



AREA D: CONCEPT & PRODUCT IMAGERY



National Waveworks



Sit On It Focus

Layout/Configuration Options



*Meeting Note: An additional (10) navy sitonit inflex chairs were added to the order.
The consensus was that all tables should be the "Amber cherry" laminate
All Finish selections shown at the meeting were agreed upon and approved.



AREA D: CONCEPT & PRODUCT IMAGERY



Keilhauer Jumble

Knoll Multigeneration

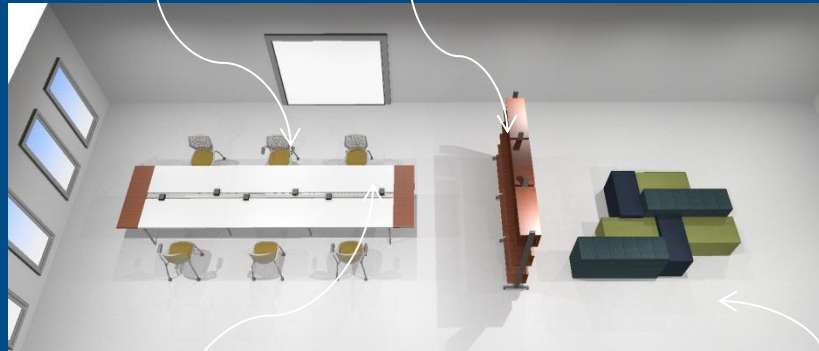
Design Drivers: Fun yet functional working environment for student workers and permanent staff.



Fixtures Dewey Bookcase

Fixtures Dewey Bookcase

Knoll Multigeneration



Knoll Antenna Benching

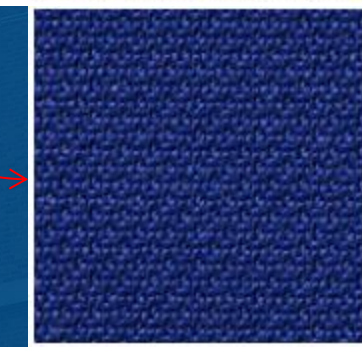
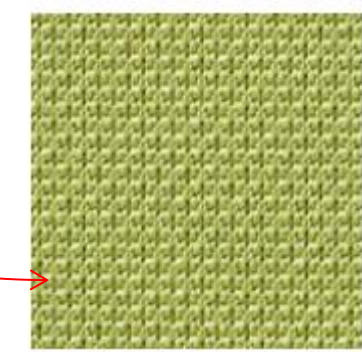
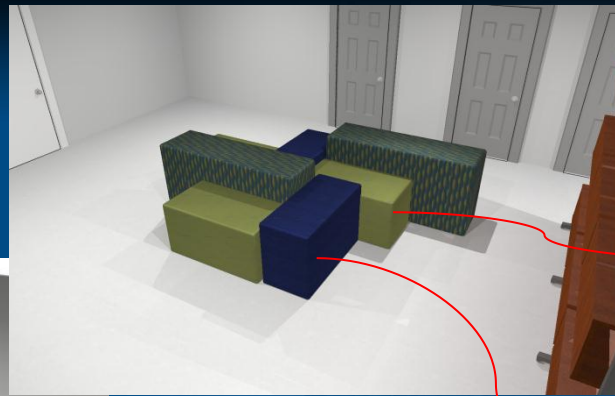
Keilhauer Jumble

***Meeting Note: Post-Meeting Finish selections/suggestion by American Interiors and The Collaborative Shown on following slide. Actual Samples will be mailed to Michael Orlando's Attention.**



STUDENT ORGS REVISED FINISHES

*Because of the bright blue accent wall... the collaborative
And American Interiors both feel these selections will work
Better than those shown previously at the meeting.



AREA D: CONCEPT, FINISHES & PRODUCT IMAGERY



National Waveworks



Sit On It Focus Task Chair with Black



Sit On It Social

*Meeting Note: Need to make a selection for pedestal cushion. Sample options for this will be mailed to Michael Orlando's attention.



ADDITIONAL CONSIDERATIONS



*Meeting Note: General discussion was had regarding outdoor furnishings. Sr. Peg and the remaining group Members liked the overall concept. Budget discussion regarding this needs to be had with Lee at a later Date to see if this should be included in the initial order.



BOARD ROOM NEVERS OPTION



National Aurora High-Back



National Aurora Side Chair

Board Room \$71,557

*General Note: I will be sending the final quote to Lee For sign off and need to get a Purchase order by next week In order to meet install date.



*Meeting Note: The group all agreed that the original design with the SHU crests on the backs Of the conference and side chairs should remain. Also the traditional trim should be kept on the base Of the tables. Wood selection for the Nevers tables is "presidential walnut". Wood selection For the side chair back is "Judicial on walnut."

